

# SCIENCE AND ENGINEERING

Science and Engineering Faculty



a university for the **real** world<sup>®</sup>

©QUT 2018 22992

# Welcome to the Science and Engineering Faculty

**Professor Gordon Wyeth**  
**Executive Dean**

Science and Engineering Faculty



a university for the **real** world<sup>®</sup>

©QUT 2018 22992

# Welcome to the Bachelor of Engineering (Honours)

**Associated Degrees and Double Degrees**

(EN02, IX59, SE40, SE60, SE80)

Science and Engineering Faculty



a university for the **real** world<sup>®</sup>

©QUT 2018 22992

# Acknowledgement *of* Traditional Owners

In keeping with the spirit of Reconciliation, I acknowledge the Traditional Owners of the lands where QUT now stands - and recognise that these have always been places of teaching and learning.

I wish to pay respect to their Elders - past, present and emerging - and acknowledge the important role Aboriginal and Torres Strait Islander people continue to play within the QUT community.



# Bachelor of Engineering Orientation

**Course Welcome and Information Session**

**Presentation by Dr. Jasmine Banks, Engineering First Year Coordinator.**

**Engineers Australia**

**Presentation by Emily Marschke, Tertiary Development Manager, Engineers Australia**

**Student Presentation Bachelor of Engineering**

**Engineering Student Clubs**

**3.00 pm Connect Session**

Science and Engineering Faculty



a university for the **real** world<sup>®</sup>

©QUT 2018 22992

# Bachelor of Engineering (Honours)

**Academic Program Director**

Associate Professor Bouchra Senadji



**First Year Coordinator**

Dr Jasmine Banks

[firstyeareng@qut.edu.au](mailto:firstyeareng@qut.edu.au)



Science and Engineering Faculty



a university for the **real** world<sup>®</sup>

©QUT 2018 22992

# Bachelor of Engineering (Honours)

## About your degree:

- course code is EN01
- need to complete 32 units, 8 units each year, over the 4 years of your degree
- full time study per academic year is 96 credit points; 48 credit points each semester
- a QUT unit is worth 12 credit points
- Bachelor of Engineering (Honours) = 384 credits points

# Bachelor of Engineering (Honours) Course Structure

Core Units  
(96 cps)

8 first year engineering units includes 2 maths units

Major (192 cps)

16 major specific units includes 2 final year projects

Second Major or  
2 Minors(96 cps)

8 units to complement your studies. Choice of 1 x Second Major (8 units) **OR** 2 x Minors (each 4 units)

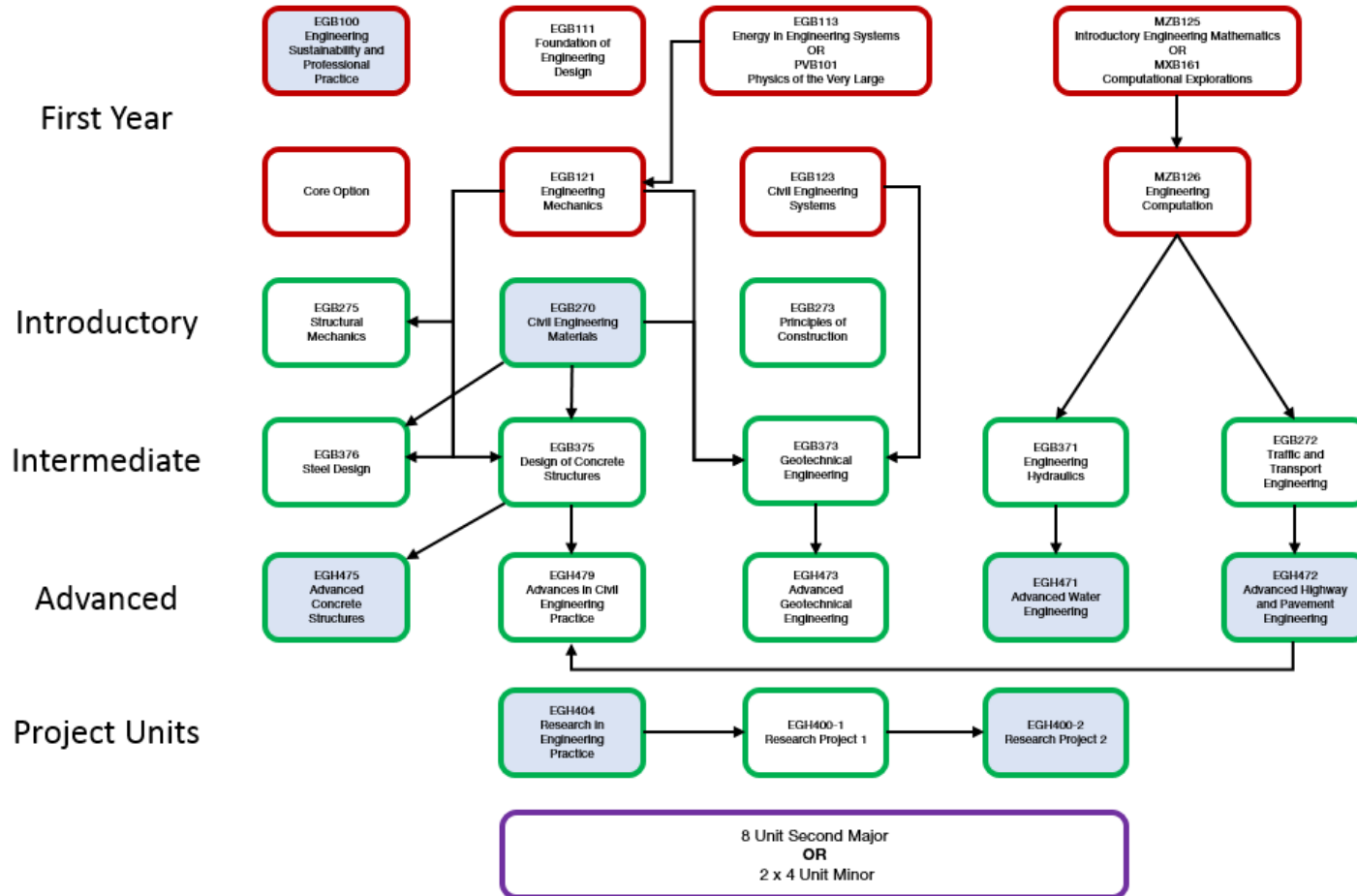
You need to review your course structures frequently as structures change on a regular basis as part of the quality assurance process.

Science and Engineering Faculty



# Example of a Course Structure:

## Civil Engineering



Black arrows indicate pre-requisite units →

### Degree

32 Units  
384 Credit Points

#### Core Units

96 credit points  
8 units

#### Major

192 credit points  
16 units

#### Second Major/ Minor

96 credit points  
1 Second Major (8 units)  
OR  
2 Minors (each 4 units)

Your Engineering degree contains aspects of Work Integrated Learning (WIL) throughout a number of units within your course structure. This is referred to as Embedded WIL.

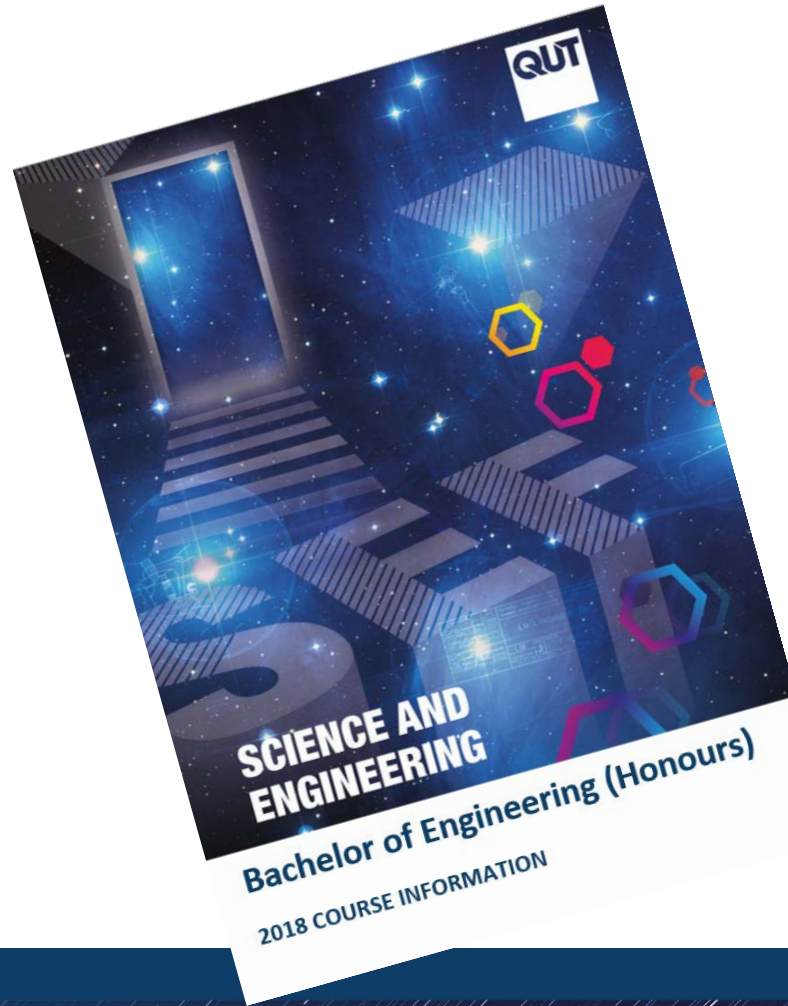
Science and Engineering Faculty



a university for the **real world**®

©QUT 2018 22992

Check out the course structures and other information in your handbook:



Science and Engineering Faculty



a university for the **real** world<sup>®</sup>

©QUT 2018 22992

# Maths Unit Selection

- If you have studied additional mathematics, including Maths C, we recommend that you undertake a mathematics self-evaluation.
- You will be advised to either:
  - remain enrolled in MZB125 Introductory Engineering Mathematics,
  - **or**
  - consider enrolling in MXB161 Computational Explorations.

# Semester 1, 2018

Your first semester is comprised of 4 engineering core units:

	Semester 1 2018
Year 1	EGB100 Engineering Sustainability and Professional Practice
	EGB111 Foundation of Engineering Design
	EGB113 Energy in Engineering Systems
	MZB125 Introductory Engineering Mathematics <b>OR</b> MXB161 Computational Explorations

# Semester 2 2018 - Foundation Unit Option:

- If you are doing the **Civil major**, take EGB123 Civil Engineering Systems and a Foundation Option Unit
- For all other majors, take EGB120 Foundations of Electrical Engineering and a Foundation Option Unit
- If you are undecided in your major, take both EGB123 and EGB120

# Semester 2, 2018

Your second semester is comprised of 4 engineering units

	Semester 2 2018
Year 1	EGB120 Foundations of Electrical Engineering OR EGB123 Civil Engineering Systems (Civil Major)
	EGB121 Engineering Mechanics
	MZB126 Engineering Computation
	Core Foundation Option Unit

# Choosing your major

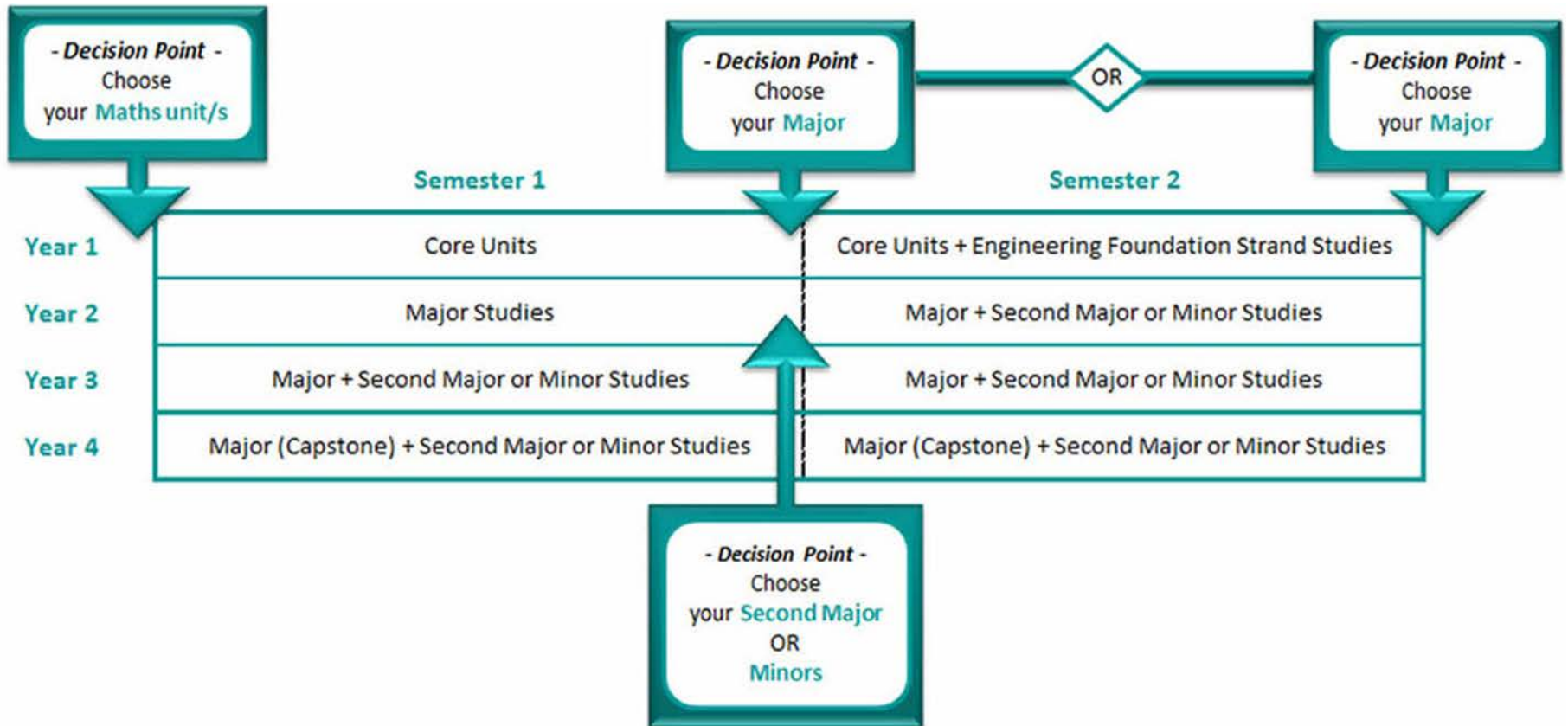
You are able to choose your Primary Major ( your specialist area/ Study Area A) at the end of your first semester, or at the end of your first year.

You choose **one major** from a possible eight:

- Civil
- Electrical
- Mechatronics
- Medical
- Electrical and Aerospace
- Computer and Software Systems
- Mechanical
- Process

More information will be provided on majors later in the semester.

# Bachelor of Engineering Decision Points



Science and Engineering Faculty



# First Year Unit Coordinators – Semester 1

EGB100 Engineering Sustainability and Professional Practice  
Professor Les Dawes



EGB111 Foundation of Engineering Design  
Associate Professor Bouchra Senadji



EGB113 Energy in Engineering Systems  
Prof Ted Steinberg



MZB125 Introductory Engineering Mathematics  
Dr Pascal Buenzli



MXB161 Computation Explorations  
Dr Timothy Moroney



Science and Engineering Faculty



a university for the **real** world<sup>®</sup>

©QUT 2018 22992

HiQ can help you with all your questions, including:

- ✓ general enquiries
- ✓ technology support
- ✓ library assistance
- ✓ student administration
- ✓ specialist referral

Gardens Point  
Library | Level 3, V Block  
Mon–Fri: 7am–10pm  
Sat–Sun: 9am–5pm

Kelvin Grove  
Library | Level 2, R Block  
Mon–Fri: 7am–10pm  
Sat–Sun: 9am–5pm

phone 3138 2000  
email [askqut@qut.edu.au](mailto:askqut@qut.edu.au)

[qut.to/abouthiq](http://qut.to/abouthiq)



a university for the **real** world<sup>®</sup>

©QUT 2018 22992

# What does your success look like?

Connect with experts who can help you achieve your goals ...

- ✓ **Academic language and learning** support
- ✓ **Science, IT, and Maths**, support (STEM)
- ✓ **Higher degree research (HDR)** academic support
- ✓ **Self-leadership** skills and development workshops
- ✓ **Conferences** and **co-curricular** opportunities
- ✓ **Employability** skills
- ✓ **Professional, internship** and **volunteering** opportunities

You can **access**  
**these services** via **HiQ**



Science and Engineering Faculty



a university for the **real world**®

©QUT 2018 22992



# STEM Support - **STIMulate**

Delivered through a group of volunteer students committed to your success in **maths, science and information technology** across QUT.

Provide assistance with **maths, science and information technology** in the subjects that you are studying.

Visit Level 2, V Block drop-in space.

Science and Engineering Faculty



a university for the **real** world<sup>®</sup>

©QUT 2018 22992



# SEF Student Services

SEF Student Services are able to assist students with course related advice, including:

- Study Plans and what units to enrol in
- Revising study plans
- Concerns about course content
- Enrolment and class registration
- Work Integrated Learning
- Concessions

**Location:** Level 3, O Podium, Gardens Point Campus

**Website:** SEF Student Zone via QUT Students

**Email:** [sef.enquiry@qut.edu.au](mailto:sef.enquiry@qut.edu.au)

**Telephone:** 3138 8822

Science and Engineering Faculty



a university for the **real** world<sup>®</sup>

©QUT 2018 22992



The Science and Engineering Faculty (SEF) take Health and Safety seriously.

All undergraduate students attending practicals in SEF laboratories or workshops **must** complete the Health Safety and Environment induction on an annual basis.

### **This means that you need to:**

- Access the [induction community site](#) on blackboard
- Watch the induction videos
- Take and pass a short quiz (18 out of 20 is the pass mark)

***Completion of the induction is a requirement to gain access to any laboratory or workshop.***

### **How to access the induction:**

1. Visit the Blackboard *Home Page*, 2. Select the *Community Finder* tab
3. Select *Science and Engineering Faculty* 4. Select [SEF Undergraduate HSE Induction](#)

# Keeping in touch

## Knowing what to do and when

- **Check** your QUT Email Address frequently – this is where we will send all updates, correspondence and notices.
- Check the Academic Calendar and know the Key Dates
- Keep your personal details up to date on **HiQ** including mobile number, and contact addresses

# SEF Student Information Blackboard Site

- Community Site on Blackboard.
- Announcements and reminders are posted here about important upcoming dates, volunteers, activities and social events for example.
- After you enrol you will be able to see SEF Student Information on <http://blackboard.qut.edu.au> under My Communities





# First Year Email List

Receive a weekly update from the First Year Coordinator

Signup URL:

<http://eepurl.com/bMGnvj>

Science and Engineering Faculty



a university for the **real** world<sup>®</sup>

©QUT 2018 22992



# Student Mobility

The Faculty is a big supporter of student mobility, we encourage every student to experience an international exchange during their studies, or even an international internship with a global industry partner as part of (or in addition to) an exchange term abroad.

Science and Engineering Faculty



a university for the **real** world<sup>®</sup>

©QUT 2018 22992



# Engineers Australia



**ENGINEERS  
AUSTRALIA**

**Emily Marschke**  
**Tertiary Development Manager**  
**Engineers Australia**

<https://www.engineersaustralia.org.au/>

Science and Engineering Faculty



a university for the **real** world<sup>®</sup>

©QUT 2018 22992



# Stage 1 Competency Standard for Professional Engineer

1. Knowledge and skill base
2. Engineering application ability
3. Professional and personal attributes



ENGINEERS  
AUSTRALIA

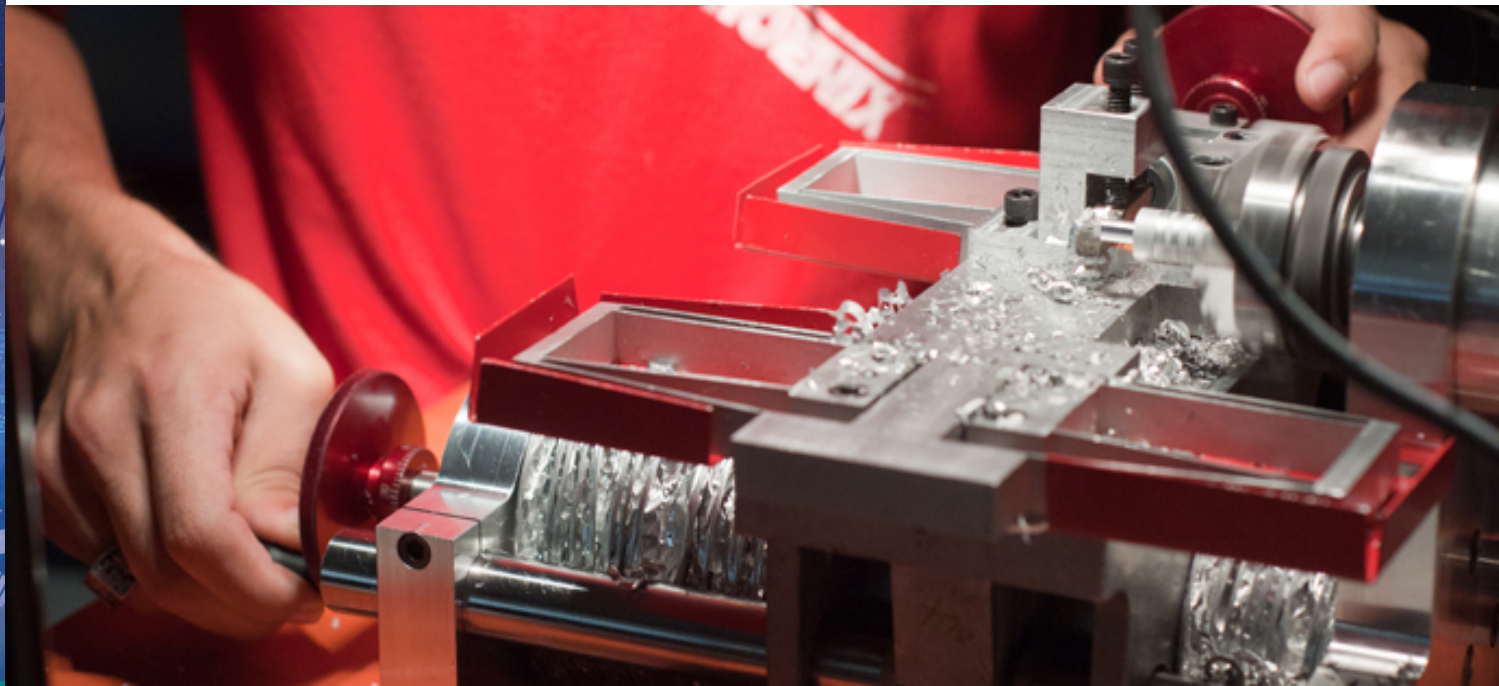
Science and Engineering Faculty



a university for the **real** world<sup>®</sup>

©QUT 2018 22992

# Mackenzi Student Presentation



Science and Engineering Faculty



a university for the **real** world<sup>®</sup>

©QUT 2018 22992



QUT Girls in  
Engineering Making  
Statements



QUT MESS



Science and Engineering Faculty



a university for the **real** world<sup>®</sup>

©QUT 2018 22992

# SEF Engineering Student Clubs

Aerospace Society (QUT Aero)

QUT Robotics Club (QUT RC)

Process Engineering Student Society (PrESS)

Solar Car Team

Civil Engineering Student Society (CESS)

QUT IT Club

Electrical Engineering Student Society (EESS)

Engineers without Borders (QUT EWB)

Mechanical Engineering Student Society (MESS)

Girls in Engineering Making Statements (GEMS)

Fellowship of Medical Engineers (FoME)

Science and Engineering Faculty



a university for the **real** world<sup>®</sup>

©QUT 2018 22992



# Questions?

Science and Engineering Faculty



a university for the **real** world<sup>®</sup>



©QUT 2018 22992





**Enjoy your QUT**

**Connect session**

Science and Engineering Faculty



a university for the **real** world<sup>®</sup>



©QUT 2018 22992