

# Uni – see you there



## Dorcas Tuyishimere

Equity scholarship recipient. Future psychiatric nurse.

*Dorcas always knew she wanted to go to university and was excited to find a double degree that combined her interest in psychology with a career path to nursing. A \$3500 Equity Scholarship at the beginning of her studies helped her buy a new computer and alleviated stress about paying bills on time. She still works part time but the scholarship has helped her focus on her studies and nursing placements, and get involved in university life through QUT African Association events.*



## Completed your pre-uni checklist?

- Entry programs
- Finances
- Accommodation
- Support services

### Check your entry options

#### Educational Access Scheme (EAS)

If you've experienced circumstances that have negatively affected your most recent studies, you can receive an adjustment to your selection rank. [qut.edu.au/study/educational-access-scheme-benefits](http://qut.edu.au/study/educational-access-scheme-benefits)

#### Regional, Rural and Remote (RRR)

**Adjustment Scheme** If you are currently residing in a regional, rural or remote area of Australia you are eligible. QTAC will assess your application, and if you're eligible you'll automatically receive an adjustment to your selection rank. [qut.edu.au/apply/adjustment-schemes](http://qut.edu.au/apply/adjustment-schemes)

**Oodgeroo Unit** For Aboriginal and Torres Strait Islander applicants. If you haven't completed Year 12 or didn't get the ATAR you need for the course you want, the Centralised Assessment and Selection Program provides another way into uni. [www.qut.edu.au/about/oodgeroo](http://www.qut.edu.au/about/oodgeroo)

#### Mature-age and post-school entry

If you haven't finished Year 12, or have studied previously, the way you apply will be through QTAC. [qut.edu.au/study/entry-pathways](http://qut.edu.au/study/entry-pathways)

#### Upgrading

If you're not sure you'll get the selection rank you need for the course you want, there are ways to upgrade. [www.qut.edu.au/upgrading](http://www.qut.edu.au/upgrading)

### Get your finances in order

**HELP loans** Many students are able to defer paying their university fees via a HELP loan, but your residency status will determine whether you're eligible. [www.qut.edu.au/study/hecs-help](http://www.qut.edu.au/study/hecs-help)

#### Centrelink

**Payments** – Government payments can help you manage your study and living costs. Payments available include Youth Allowance, Austudy and ABSTUDY.

**Loan** – If you receive one of the above Centrelink payments you can also apply for a Student Start-up Loan, which is repaid in the same way as a HELP debt.

**Relocation scholarship** – If you receive Youth Allowance or ABSTUDY and move from a regional or remote area to study, you could be eligible. [www.servicesaustralia.gov.au/individuals/students-and-trainees](http://www.servicesaustralia.gov.au/individuals/students-and-trainees)

**QUT Equity scholarships** These scholarships are awarded based on financial need. Computers are also available through the scheme. [www.qut.edu.au/equity-scholarships](http://www.qut.edu.au/equity-scholarships)

**Other QUT scholarships** QUT also offers scholarships based on factors such as academic merit, being an elite athlete, being from a regional area, and many more. [qut.edu.au/scholarships](http://qut.edu.au/scholarships)

**Part-time work** Most students need a part-time job to make ends meet. There are lots of ways to find work, including online search engines, and QUT UniHub.

### Put a roof over your head

**Accommodation Services** Get information and advice on accommodation, and assistance if problems arise. [qut.edu.au/accommodation](http://qut.edu.au/accommodation)

### Get support

**O-Week** Your key to success. Find your feet, know where you're going and make friends. [qut.edu.au/orientation](http://qut.edu.au/orientation)

**Disability Services** For students with a disability, injury or health condition. Make early contact to get the support you need. [www.qut.edu.au/disability-support](http://www.qut.edu.au/disability-support)

**Faculty low income student contact officers** Support available from faculties varies but may include: photocopy credit and help with course costs such as special uniforms or equipment.

**QUT Financial Helpline** Welfare officers can help you with: budgeting, Centrelink advocacy and information, a loan through the Student Financial Assistance Scheme, and information about scholarships and bursaries. Email [welfare@qut.edu.au](mailto:welfare@qut.edu.au)

**Student Guild** The Guild offers a food bank, legal assistance, clubs and societies, community referrals and much more. [www.qutguild.com](http://www.qutguild.com)

the university  
for the real world®

## Is university for me?



**There's a strong**  
Aboriginal and  
Torres Strait Islander  
community.

# 20%

of QUT students come  
from **outside Brisbane.**



NEARLY

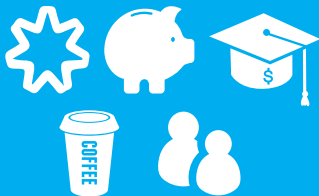
# 7000



**international students**  
**from more than**  
**100 countries** study  
at QUT—enjoy a  
culturally diverse and inclusive  
environment.

## Money matters

### SUPPORT THROUGH



Centrelink, scholarships,  
HECS-HELP, part-time  
work and help from  
parents/guardians.



# \$5 MILLION

IN SCHOLARSHIPS

available to students  
who need financial  
support.



**BACHELOR DEGREE  
GRADUATES EARN**

# 40%

more over their working life  
than those whose highest  
qualification is Year 12.

**the university  
for the real world**

**QUT**