



Parent Information Seminar

Sarah Griinke, Student Recruitment

15 May 2018

a university for the **real** world[®]

Acknowledgement *of* Traditional Owners

In keeping with the spirit of Reconciliation, I acknowledge the Traditional Owners of the lands where QUT now stands - and recognise that these have always been places of teaching and learning.

I wish to pay respect to their Elders - past, present and emerging - and acknowledge the important role Aboriginal and Torres Strait Islander people continue to play within the QUT community.

The logo for Queensland University of Technology (QUT), consisting of the letters 'QUT' in a bold, black, sans-serif font on a white square background.

Reconciliation at QUT

a university for the **real** world[®]

www.qut.edu.au/about/our-university/acknowledgement-of-traditional-owners



Tonight's program

- About QUT
- Making career decisions
- Getting in: admission pathways
- Life as a university student
- Study costs and financial support
- Support for students
- Resources available
- Questions

The information provided is intended for domestic students. Different course, fee and admission information may apply for international students.



About QUT: an overview

a university for the **real** world[®]



Quick glossary

Undergraduate study: the first level of study at university, usually a three or four-year bachelor degree.

Bachelor degree: an Australian Qualifications Framework qualification that takes three to four years to complete.

Double degree: a combination of two single degrees, studied at the same time and completed in shorter duration than studying the single degrees. For example, Bachelor of Business/Bachelor of Creative Industries.



Quick glossary

Units (subjects): a set of classes run over a teaching period on a particular subject matter. i.e. the individual units of study that make up a degree. A full-time student usually completes four units per semester.

Core units: mandatory units that all students in a particular degree must study.

Major/minor/electives: a major is the main area of study and is usually a group of eight units about a specific topic, e.g. Bachelor of Creative Industries (Film, Television and Screen). A minor is a secondary area of study, usually four units, e.g. a minor in advertising. Elective units are individual units students can undertake in an area of interest.



Why choose QUT?

There are many reasons to consider QUT:

- Solid international reputation
- Award-winning teachers
- Industry-standard facilities
- Strong links with industry
- Our graduates are in demand



Global outlook

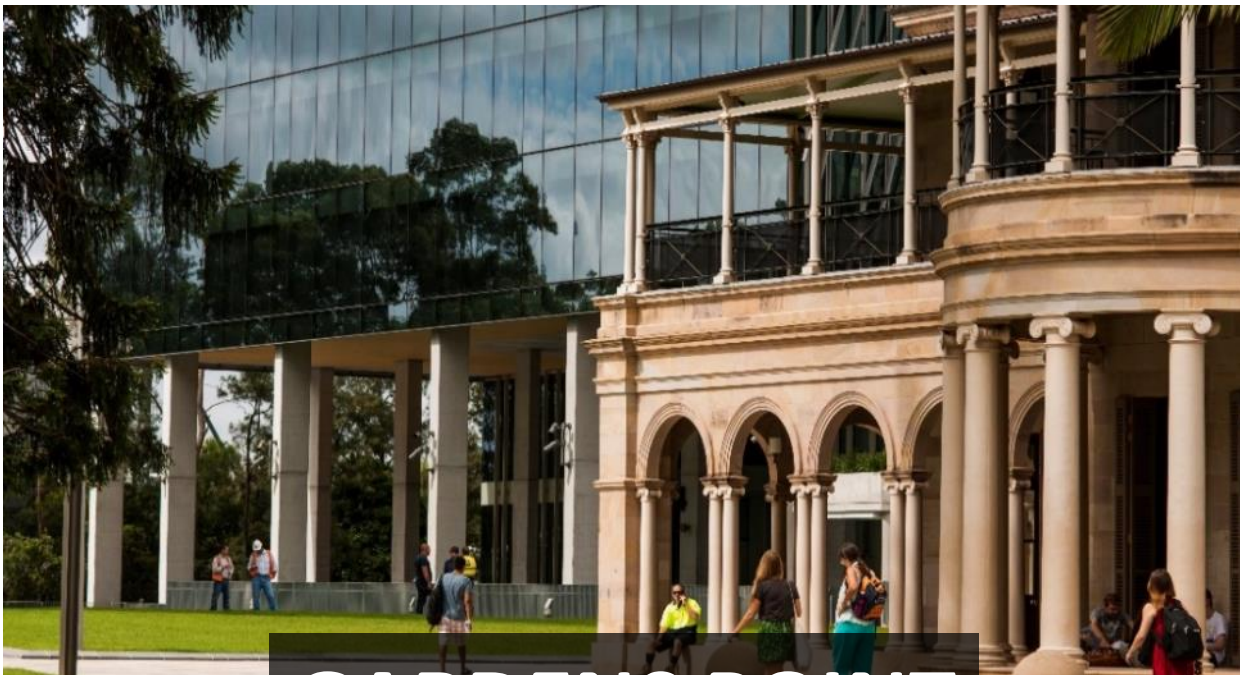
- Overseas exchange
- Study tours and aid projects
- Add a language



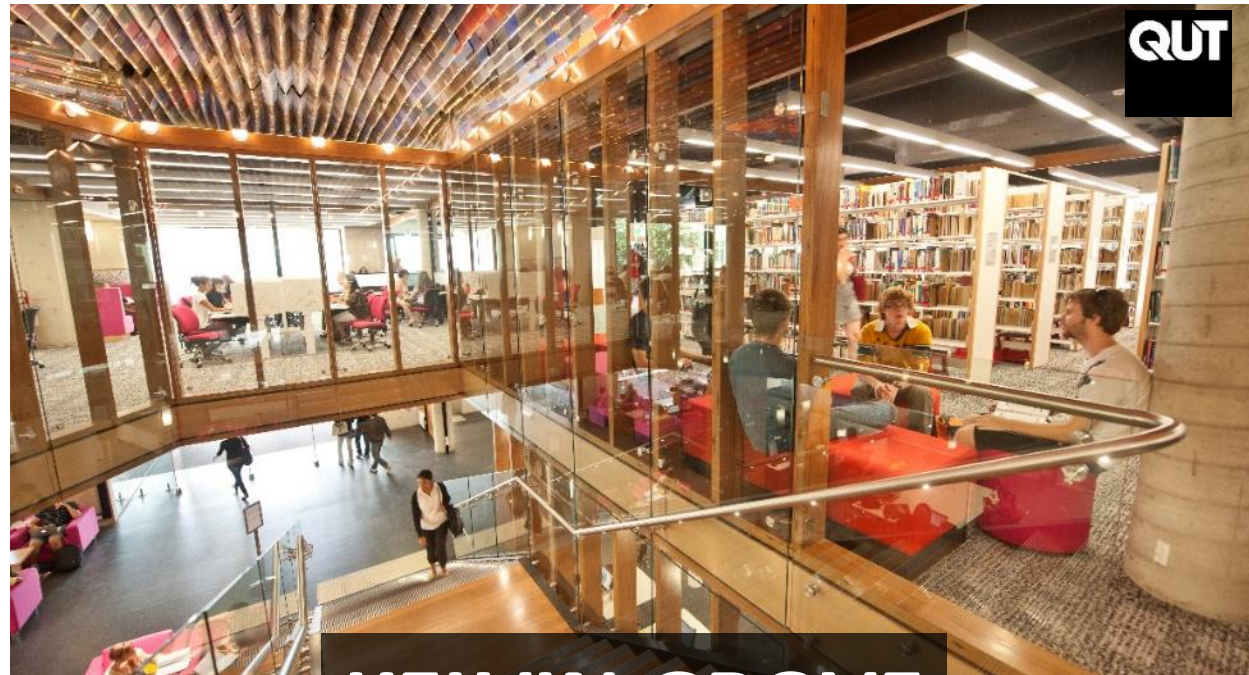
Our vision for our students

It's not just about a qualification. Our aim is to also help our students to become future:

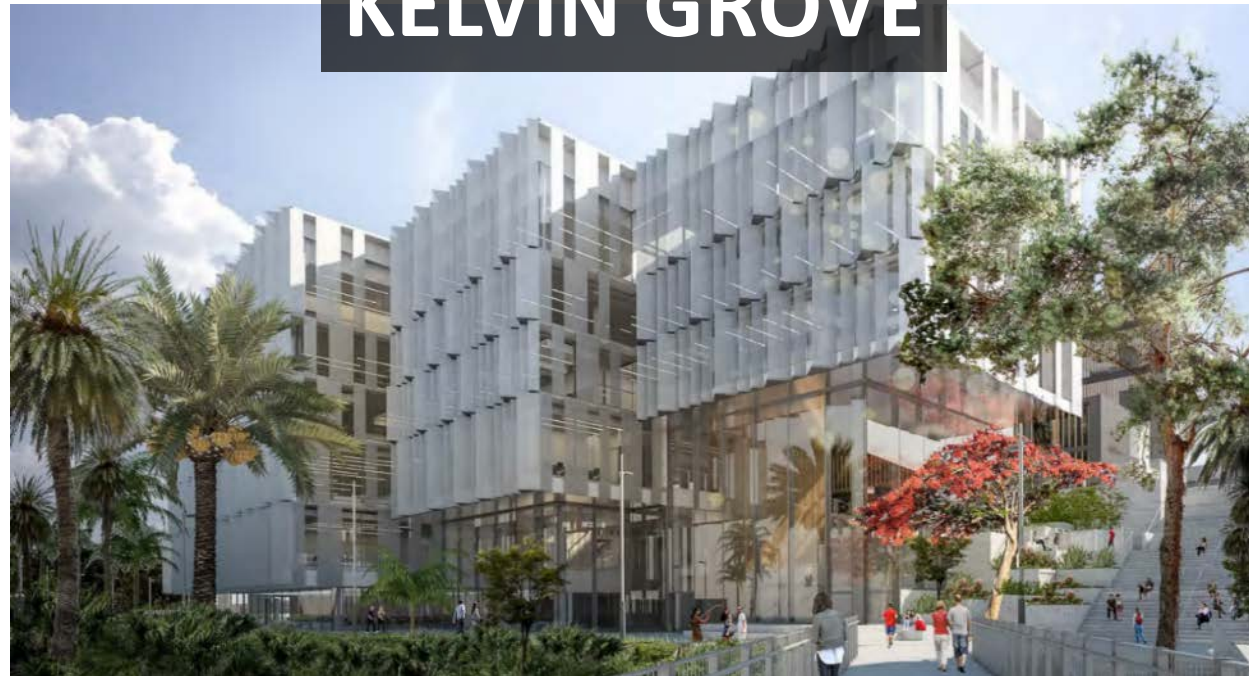
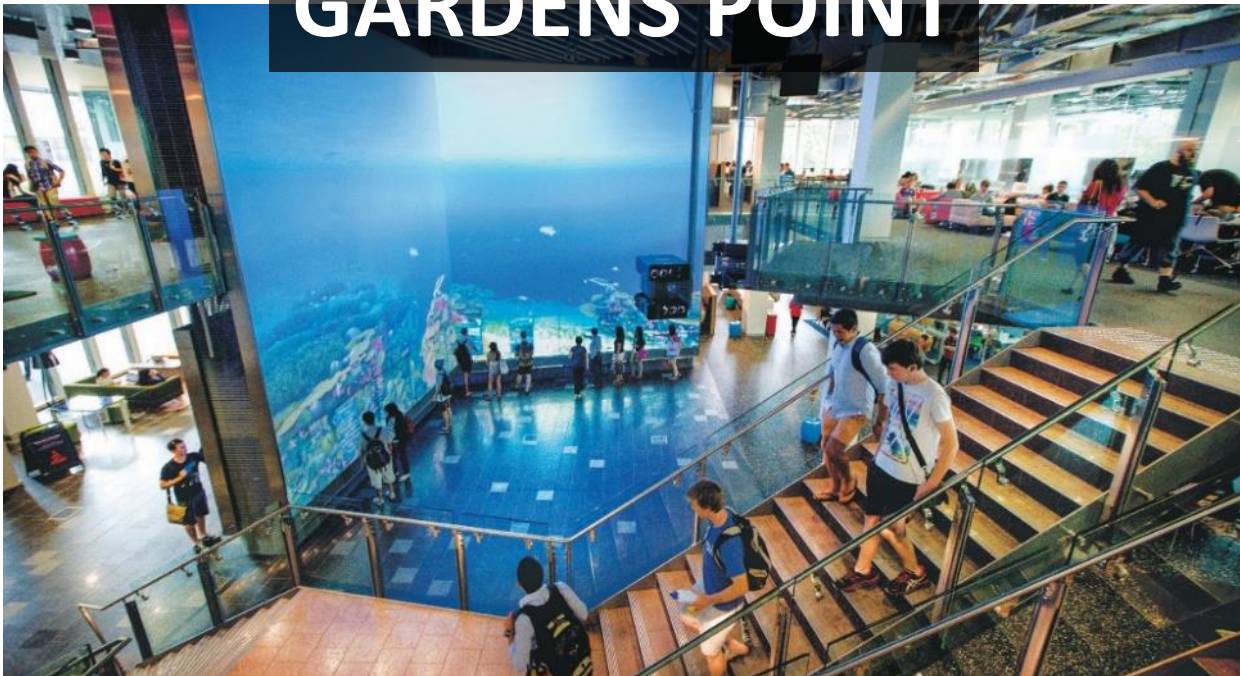
- Collaborators
- Communicators
- Entrepreneurs
- Leaders



GARDENS POINT



KELVIN GROVE





Making career decisions

a university for the **real** world[®]

QUT website



Queensland University of Technology [AU] | https://www.qut.edu.au



a university for the **real world**[®]

[Login](#)

[Contact QUT](#)

[Study](#)

[Research](#)

[Engage](#)

[About QUT](#)

Search



Real world success

Nick studied a Bachelor of Laws at QUT. Now he's a digital economy lawyer in London.



[Nick's success story](#)





Your role as a parent

- Facilitate their career decision making
- Support and listen
- Encourage exploration
- Foster thorough decision making



Let them know they can change their mind—before they start, during their course, or after they finish.

Step by step process

1. Encourage self exploration
2. Explore opportunities
3. Consider multiple pathways
4. Make an informed decision



Encourage self-exploration

- Discuss their skills and aptitudes
- Explore their personality, interests, and values
- Encourage them to consider the lifestyle they desire (work-life balance, wealth, travel)

Resources:

- Kickstart Your Career: www.futurelearn.com/courses/kickstart-your-career
- Match My Skills: www.qut.edu.au/study/undergraduate-study
- My Future: www.myfuture.edu.au





Explore opportunities

- Occupations then courses
- Encourage your child to ask people about their careers—provide introductions to family, friends, acquaintances
- Help to develop questions:
 - What do you do on a daily basis?
 - What skills and abilities do you need in the role?
 - What is happening in the industry—changes, job opportunities?

Also questions related to values and goals—money, travel, hours of work, career progression, making a difference, creativity, etc



Resources:

- My Future: www.myfuture.edu.au, Google, LinkedIn
- Professional association websites (e.g. Australia Psychological Society)

Consider multiple pathways



- How can they gain the skills needed for the profession?
- What courses relate to the chosen profession?
 - What does the course involve? What subjects are studied?
 - Is there a good link with industry?
 - How successful were past graduates in gaining employment?
 - Is further study needed (e.g. law, psychology, etc.)
- What are some alternatives?
 - Is there a double degree or a way to combine two areas of interest (such as a second major in a flexible course)?

Resources:

- My Future website, university websites, professional association websites
- Talk to university staff: Open Day, TSXPO

Make an informed decision



Important criteria (examples listed to the right)		Industry experience in course	Travel time	Job availability	Total
Rate each criterion from 0 (not important) to 5 (very important)		3	2	5	n/a
Rate how well each course meets the criteria above from 0 (does not meet at all) to 3 (meets very well)					
Rate from 0-3 how well this course meets the criteria above	Degree A	3	3	1	7
	Degree B	2	2	3	7
Multiply course score (above) by the rating of how important the criterion is, to give final ranking of Degree A against Degree B	Degree A	$3 \times 3 = 9$	$3 \times 2 = 6$	$1 \times 5 = 5$	20
	Degree B	$2 \times 3 = 6$	$2 \times 2 = 4$	$3 \times 5 = 15$	25



Getting in: Admission pathways

a university for the **real** world[®]



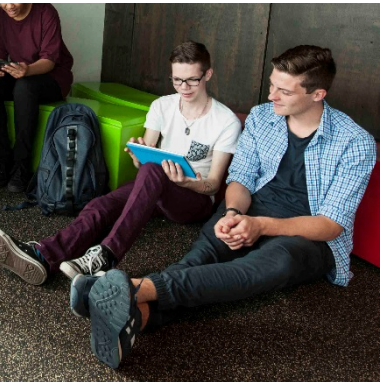
Quick glossary

OP: issued by the Queensland Curriculum and Assessment Authority to current Queensland Year 12 students. Highest is 1, lowest is 25.

Selection rank: derived from other studies (International Baccalaureate, interstate Year 12, OP-ineligible students, former OP students, TAFE students, applicants with tertiary studies). Highest is 99, lowest is 1.

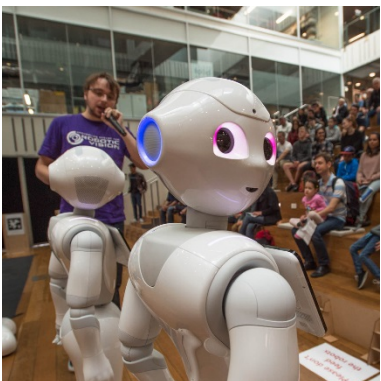
QTAC:

- Queensland Tertiary Admissions Centre: www.qtac.edu.au
- Process applications for Queensland universities and many TAFE courses
- **QTAC Guide** distributed at school early in third term to Year 12 students



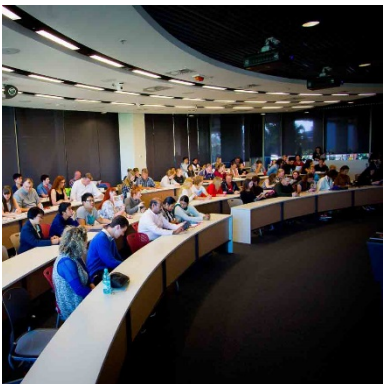
How selection is made

- Entry to most courses based on academic merit (OP/selection rank)
- Thresholds change from year to year based on the number of places, number of applicants and OP (selection rank) of applicants
- Some courses have additional entry requirements:
 - some QUT Creative Industries courses require registration with QUT for an audition or interview, or submission of a portfolio (by 5pm on 14 September); as well as QTAC application
 - education courses require a statement to address suitability criteria with QTAC application
 - check the online course information, course books or *QTAC Guide* carefully to ensure you meet the deadlines as late applications are not considered.



QTAC applications

- Apply online from 2 August at www.qtac.edu.au
- Early-bird QTAC applications due 28 September
- Include up to 6 courses from across all institutions
- Can make changes to preferences (add, reorder) for most courses until early January



Ordering preferences

Step 1

– desired courses → back-up courses → pathways courses

Preferences 1 and 2: desired courses they most want to study

Preferences 3 and 4: back-up courses that they want to study but are less competitive for entry

Preferences 5 and 6: pathway courses that are usually easier to get into, will help you gain entry to your preferred course

Step 2

– order preferences in offer round date

Resources:

– www.qtac.edu.au



Admission pathways

QUT recommends the following pathways:

- **Degrees**—complete one year full-time load and pass all subjects you will get a minimum QUT selection rank of 93 (OP 5)
- **Advanced diplomas**—on completion you will have a minimum QUT selection rank of 93 (OP 5)
- **Diplomas**—on completion you will have a minimum QUT selection rank of 87 (OP 7)
- **Dual awards with TAFE**—complete TAFE qualification and automatically gain entry to QUT (specific courses) with credit for your study. Available in business, IT, civil engineering, nursing, human services and social work.

Resources:

- www.qut.edu.au/upgrading





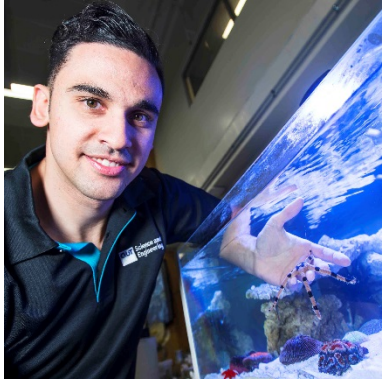
How QTAC offers are made

- There is an offer round for each course—mid-January for QUT courses
- Students can receive offers from 16 November or from 20 December
- QTAC will notify students if they have an offer
- Check your QTAC portal online for advice about the status of each course preference
- Will only receive one offer for their highest eligible preference
- Students can choose to accept, defer, reject their offers outright, or ‘conditionally accept’ and be considered for higher preferences in the next round

Resources:

- www.qtac.edu.au/key-dates-fees
- www.qut.edu.au/study/after-QTAC

Admission requirements



Assumed Knowledge—www.qut.edu.au/assumed-knowledge

- Indicates a minimum level of subject knowledge
- Not a factor in receiving an offer, unlike prerequisites
- Students should complete subjects at school
- QUT bridging courses in Physics, Chemistry and Maths B
- An exception: Bachelor of Education courses have prerequisite subjects that must have been completed to gain entry to the course



Bachelor of Education prerequisites—www.qut.edu.au/prerequisites

- English or English for ESL (4 SA)
- At least one of Maths A, B or C (4 SA)
- Additionally, for early childhood and primary education offerings:
 - at least one Science (4 SA)—Agricultural Science, Biology, Chemistry, Earth Science, Marine Science, Marine Studies, Physics or Science21



OP Guarantee

- If a student achieves an OP 5 (or selection rank of 93, or IB score of 33) or better they are guaranteed a place into most QUT courses

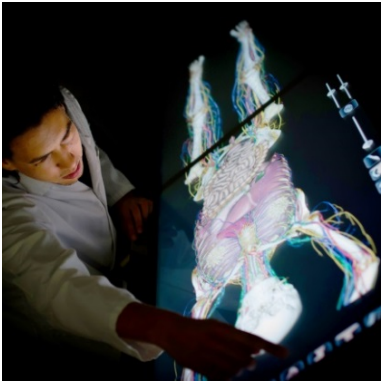
Adjustment factors

Educational Access Scheme through QTAC

- A selection rank adjustment may be awarded through the Educational Access Scheme (EAS) students who have experienced difficult circumstances impacting on their studies such as home environment and responsibilities, English language difficulty, personal illness and disability, educational disruption, financial hardship
- Maximum adjustment of 10 selection ranks (equivalent for 5 OPs) for multiple categories
- If successful under financial hardship category, will receive a guaranteed \$3500 QUT Equity Scholarship on enrolment

Elite athlete adjustment through QTAC

- Elite athletes, referees or coaches
- Can receive an adjustment of up to 6 selection ranks (equivalent to 3 OPs) if eligible





Adjustment factors

Year 12 subject scheme

- Adjustment of 2 selection ranks for passing Maths C, Physics or Languages Other Than English (LOTE) subjects (i.e 4 SA or better)
- Adjustment of 1 selection rank for passing a university subjects while at school (e.g. START QUT)
- Adjustment of 2 selection ranks for passing Engineering Technology or Aerospace Studies (i.e. 4 SA or better) for students who apply to study a QUT Bachelor of Engineering or related double degree
- Calculated automatically by QTAC



Resources:

- www.qut.edu.au/special-entry

Other admission options

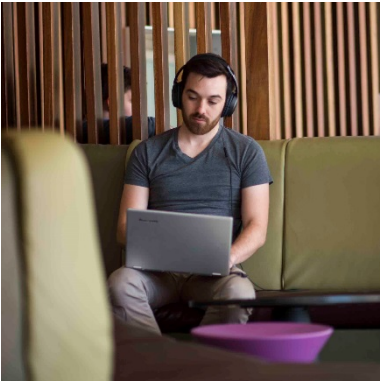
Oodgeroo Unit—Centralised Assessment Selection Program

- Entry program (and support services) for students who identify as Aboriginal or Torres Strait Islander
- Aboriginal and Torres Strait Islander students who don't receive an Indigenous Commonwealth Scholarship are guaranteed an Equity Bursary of \$1500



Checklist

1. Be aware of additional entry requirements and deadlines
2. Consider adjustment factors and apply
3. Apply for scholarships
4. Lodge QTAC application online by 28 September
5. Check school results/OP—available online 15 December
6. Visit QUT's Real Decisions event on 18 December
7. Finalise preferences by deadlines
8. QTAC will email as offers are made—respond by the deadline



Year 10 and younger – ATAR from 2020



- In 2020, the Australian Tertiary Admissions Rank (ATAR) will replace the OP
- ATAR = standard measure of overall school achievement and is expressed on a 2000-point scale from 99.95 (highest) down in increments of 0.05
- Current Year 10 students will be the first to receive an ATAR
- *A Quick Guide to QUT* includes ATAR equivalents
- General subjects vs Applied subjects
- Assumed knowledge/prerequisite subject names will be different:
 - Maths A = General Mathematics
 - Maths B = Mathematical Methods
 - Maths C = Specialist Mathematics
 - English = English, Literature, English as an Additional Language, English and Literature
 - (Units 3 & 4, C) – you must achieve a grade of C or higher in Units 3 & 4
- Message is still to choose subjects they enjoy and think they may be good at and may be required for their choice of further study
- My Path online tool will replace the printed QTAC prerequisites guide
- www.qtac.edu.au/atar-my-path

Life as a university student

Advice from someone who's been there

Rebecca Colbrook

Bachelor of Business (Economics) &
Bachelor of Laws (Hons)

Fifth year



Who am I?

- Graduated Somerville House in 2013
- Really liked the practical applications of my degrees
- Overseas opportunities (exchange in Dublin & short-term study options in Mumbai)
- Vice Chancellor's Scholarship



My course

- Majoring in qualitative economics (international and environmental aspects) and focussing on international law
- Didn't take business or law in school
- Decided by looking at careers and using a process of elimination
- When I grow up I want to be... a management consultant



International Business Case Competitions

- Part of the QUT team
- Real world business problem for companies such as Walmart Canada, IBM and L'Oreal
- Present a recommendation to a panel of industry professionals and company board members
- Competed in Melbourne, Montreal and Copenhagen



What's different

- You don't have to go!
- Self-directed learning
- Your opinion is important and valued
- Social sports and clubs
- Most (all) students will be working part-time

	Monday	Tuesday	Wednesday	Thursday	Friday				
8:00-8:30	Study		Study	Gym	Coffee catch-up				
8:30-9:00									
9:00-9:30		Lecture (Legal Research)				Work	Work	Work	
9:30-10:00									
10:00-10:30									
10:30-11:00									
11:00-11:30	Travel to uni		Study						
11:30-12:00									
12:00-12:30	Lecture (IP law)	Lunch catch-up	Work	Work	Work				
12:30-1:00									
1:00-1:30		Tutorial (Ethics)							
1:30-2:00									
2:00-2:30	Study	Study							
2:30-3:00									
3:00-3:30									
3:30-4:00	Tutorial (Legal Research)	Lecture (Ethics)	Case comp training	Tutorial (IP law)	Social				
4:00-4:30									
4:30-5:00									
5:00-5:30	Gym	Gym	Study	Study					
5:30-6:00									
6:00-7:00	Social	Gym	Study	Study					
7:00-7:30									

The fun stuff

- Maintaining work, study, exercise and a social life becomes a balancing act
- The travel opportunities are endless
- The law library is your second home (and is also fun if someone has snacks) 😊



What I wish I'd known before starting uni

- Always look for second-hand textbooks first
- There is a club or society for anything and everything – you just need to find them!
- Apply for exchange early (so you can do two!!!)



Tips for parents

- Understand the system (double degrees, deadlines, application process)
- Go to events with your son/daughter
- Listen – let them make their own mistakes
- University now may be different to your experience – it's easy (and common) to change.





Study costs and financial support

a university for the **real** world[®]

University costs explained

Types of costs

- Tuition fees
- Unit/course costs
- Living costs
- Student services and amenities fee

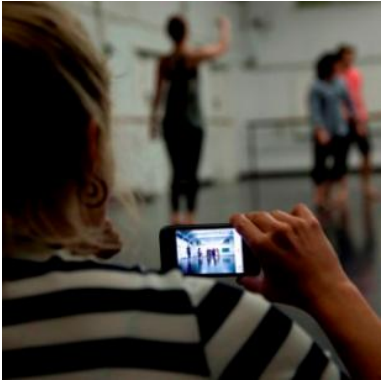


Tuition fees and Commonwealth supported places (CSP)



- Most domestic students study in Commonwealth supported places where the Government pays for some of the course cost and the student also pays a contribution
- To be eligible for a Commonwealth supported place students must be:
 - an Australian citizen, or
 - a New Zealand citizen who will be a resident in Australia for the duration of the unit of study, or
 - the holder of a permanent visa who will be resident in Australia for the duration of the unit of study
 - a Permanent Humanitarian Visa Holder.

Student contribution amounts in 2018



For 2018	Band	Estimated cost (two semesters)
Band 3	Accounting, administration, economics, commerce, law	\$10,754
Band 2	Mathematics, statistics, computing, built environment, health, engineering, surveying, science	\$9,185
Band 1	Education, nursing, visual and performing arts, behavioural science, social studies, foreign languages	\$6,444

Rates shown are based on one equivalent full-time student load in 2018. The actual contribution may vary each semester depending on the units studied and the band for each unit.

Student contribution payment



- Students have a choice about how they pay for their contribution:
 - pay the total student contribution up front
 - defer the full payment of the student contribution and receive a HECS-HELP loan
 - pay some of the student contribution up front and receive a HECS-HELP loan for the remainder
- To be eligible for HECS-HELP loan, students must be:
 - in a Commonwealth supported place
 - an Australian citizen, or a permanent humanitarian visa holder living in Australia for the duration of the course
 - a New Zealand citizen who holds a special category visa and meets all the eligibility requirements
- Otherwise, the student contribution must be paid up front

Tax file numbers

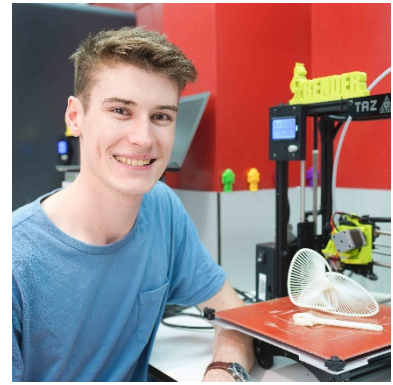
- When applying for a HECS-HELP loan, you will need to ensure all of your personal details exactly match those held with the Australian Tax Office
 - Including full name, date of birth, gender, tax file number, etc
- Failure to provide the correct matching details can result in a student's Commonwealth supported place being revoked



HECS-HELP loans

- Available to defer payment of your student contribution until you are out in the workforce
 - repayments commence when you reach the income threshold of \$55,874 for the 2017-18 income year
 - loans are repaid through tax at 4 to 8 per cent of salary
 - voluntary repayments can be made at any time
 - subject to indexation in line with changes in the cost of living as measured by the Consumer Price Index (CPI) rate

Proposed changes: For up to date information on any government proposals related to study costs, loans and repayments please visit www.studyassist.gov.au



Other costs



- **Additional course costs** such as travel and accommodation for pracs or field trips, uniforms, art materials, vaccinations.
 - check the additional compulsory course costs at www.qut.edu.au/additional-course-costs
- **Student services and amenities fee** charged by the university to provide non-academic services
 - full-time students pay a maximum of \$298 per year (2018)
 - SA-HELP loan program to defer payment
- **General studying and living costs** such as transport, food, printing, stationery, mobile phone, clothing, entertainment, rent, electricity, etc.
 - www.qut.edu.au/study/student-life/life-in-brisbane
 - www.counselling.qut.edu.au

Financial support

Consider:

- Austudy, Youth Allowance, Abstudy: www.humanservices.gov.au
- Scholarships: www.qut.edu.au/study/undergraduate-scholarships
- Family support
- Part-time jobs – QUT Student Guild website and QUT CareerHub
- Student Financial Assistance Scheme – short-term loans for eligible students and welfare officers: www.qut.edu.au/support





Scholarships

- We encourage you to apply for scholarships
 - academic
 - sporting excellence
 - low-income students
 - Aboriginal and Torres Strait Islander students
 - faculty and course-specific



Resources:

- www.qut.edu.au/scholarships





Vice-Chancellor's Scholarships



- 90 academic scholarships up to \$30 000 each
 - 15 academic scholarships \$10 000 each
 - 8 elite athlete scholarships valued at up to \$30 000 each for commencing students
 - 12 elite athlete scholarships valued at up to \$10 000 each for continuing students
 - 8 elite visual and performing arts scholarships valued at up to \$30 000 each, for students in acting, dance performance, visual arts or music degrees
 - 12 creative industries scholarships valued at up to \$10 000 each, for students in dance, business/visual arts, acting, dance performance, visual arts and music degrees
- Apply by **16 November 2018** at www.qut.edu.au/scholarships
 - QUT will make first-round scholarship offers in December to applicants who have QUT as their first course preference. Not all first-round offers are accepted so if you don't receive a scholarship offer, you may still be eligible in the second round.

Scholarships scheme for low-income students



- In 2019 the Equity Scholarships Scheme has around \$4 million in scholarships, bursaries and computers available who people who need financial help
- Based on financial hardship and personal circumstances, not academic merit.
 - Equity Scholarships range in value from \$1500-\$7500 for one year
 - QUT computer scheme—desktop computers with broadband grants for eligible students (Semester 1 only)
 - Indigenous Commonwealth Scholarships
 - Tim Fairfax AC Regional and Remote Scholarships and Dr Laurie Cowled Learning Potential Fund Scholarships—for students who are experiencing financial hardship and are from regional or remote areas
- All low-income students are encouraged to apply for QUT equity scholarships even if not eligible for Commonwealth Scholarships or EAS (financial hardship).

Resources:

- www.qut.edu.au/equity-scholarships



Support for students at QUT

a university for the **real** world[®]

Common transition issues

- It can take a while, sometimes all of first semester, and into the second for students to transition into university.
- Many factors influence transition:
 - being uncertain about your course
 - financial concerns
 - previous educational experiences
 - family experience with higher education
 - balancing study, work, life
 - timely access to support services
 - getting to know peers, staff and place
 - understanding expectations.



First year experience program

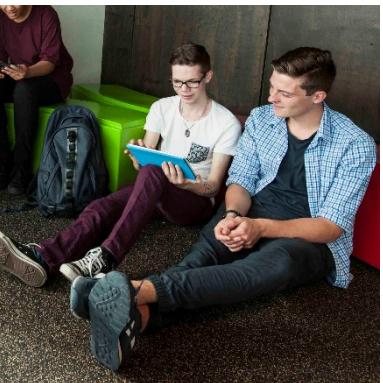


A university-wide, recognised best-practice program that:

- ensures students have access to the information and services they need for a successful transition—Orientation, Ask Me, HiQ
- identifies students who need support and connect them with personal and academic support services—contact by current students
- provides curriculum to engage students in learning and develop the skills needed for university and their discipline
- creates opportunities for students to network with peers and staff—Orientation.

This program has proven results—students have better results and lower attrition.

Where can students get help?

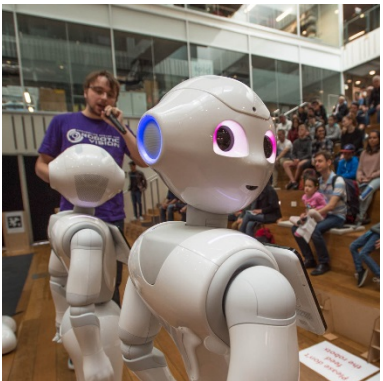


- QUT has many easily accessible support services:
 - library research and study resources assistance, personal counselling, academic skills workshops, course choice advice, health and medical, special learning and disability services, career planning and advice
 - staff at HiQ service points and contact centres and in faculty students centres will help students find the right type of service
 - if students are not sure—just ask.

Resources:

- www.qut.edu.au/support
- www.qut.edu.au/study/student-life

Moving to Brisbane



- Start thinking about accommodation options early
 - around November in the year prior for residential or catered accommodation
 - a month or so before semester for share houses
- QUT has a complete accommodation service for
 - tenancy matters
 - advice about student accommodation complexes
 - access to the accommodation vacancies database
 - accommodation@qut.edu.au or 07 3138 1596 www.qut.edu.au/study/student-life/life-in-brisbane
- Attend QUT Orientation session for regional and rural students

How to ensure a successful transition



- Become familiar with the campus and idea of university – through events, tours, websites
- Attend orientation activities
- Be on campus and get involved in the course and other on-campus activities
- Find the right uni-work-life balance
- Use the learning, life and administration support services—you are not alone, accept that you may need help and seek it out
- Get your ID card as soon as you accept an offer
- Check QUT email and HiQ daily

Experience it

- **START QUT**

- program for high achieving students to extend their studies and experience university while in Year 12
- study one or two units while in Year 12
- apply in third term of Year 11
- details at www.qut.edu.au/startqut

- See the campus, talk to staff and students at events
 - www.qut.edu.au/study/events



See for yourself what
makes QUT a university
for the real world

OPEN DAY

SUNDAY 29 JULY 2018 9AM–3PM

GARDENS POINT (CITY) CAMPUS

www.qut.edu.au/open-day

CRICOS No.00213J

© QUT 2018 23455



a university for
the real world



Find out more

- General enquiries
 - Web 24/7 answers: www.ask.qut.edu.au
 - Live chat: www.qut.edu.au/student-centres
 - Email: askqut@qut.edu.au
 - Visit a QUT HiQ Service Point on each campus
- Visit our dedicated website for parents and sign up to receive reminders about important dates and events
 - www.qut.edu.au/parents
- Sarah Griinke – dedicated contact for parents
 - Phone: 07 3138 3058
 - Email: parents@qut.edu.au





Any questions?

a university for the **real** world[®]